



**Pembina Hills**  

---

**SCHOOL DIVISION**

**Electoral Ward Review 2019-2020**

# Pembina Hills School Division Electoral Ward Review

## Goal:

Review the current ward structure to ensure that it effectively represents both our general and school populations and communities in alignment with Policy 7-0 Board Operations: Wards.

# Guiding Principles

1. Trustees represent the division's interest in public education. Trustees bring their knowledge of the communities and schools they represent to the board table in order to make decisions in the best interest of all students. The Board must continue to balance the needs of all schools versus individual schools.
2. As locally elected officials, trustees are accountable to their communities and public. School board and municipal elections are held every four years. The next election will occur on October 18, 2021.
3. The *Education Act*, section 76 allows school divisions to elect trustees at large or by wards.

# Decision Making

Factors to consider:

- Representation by population: +/-25% of the average ward population
- Sparsity of population
- Community input
- Potential cost savings
- Increased responsibilities of trustees - if reducing the number of trustees to 6

Wards and electoral sub-divisions were established in 1994. Since then, enrolment has dropped 1,578 students (29.46%) and there are four less schools.

If changes are necessary the board must pass a bylaw by December 31, 2020, and it would take effect for the October 2021 general election.

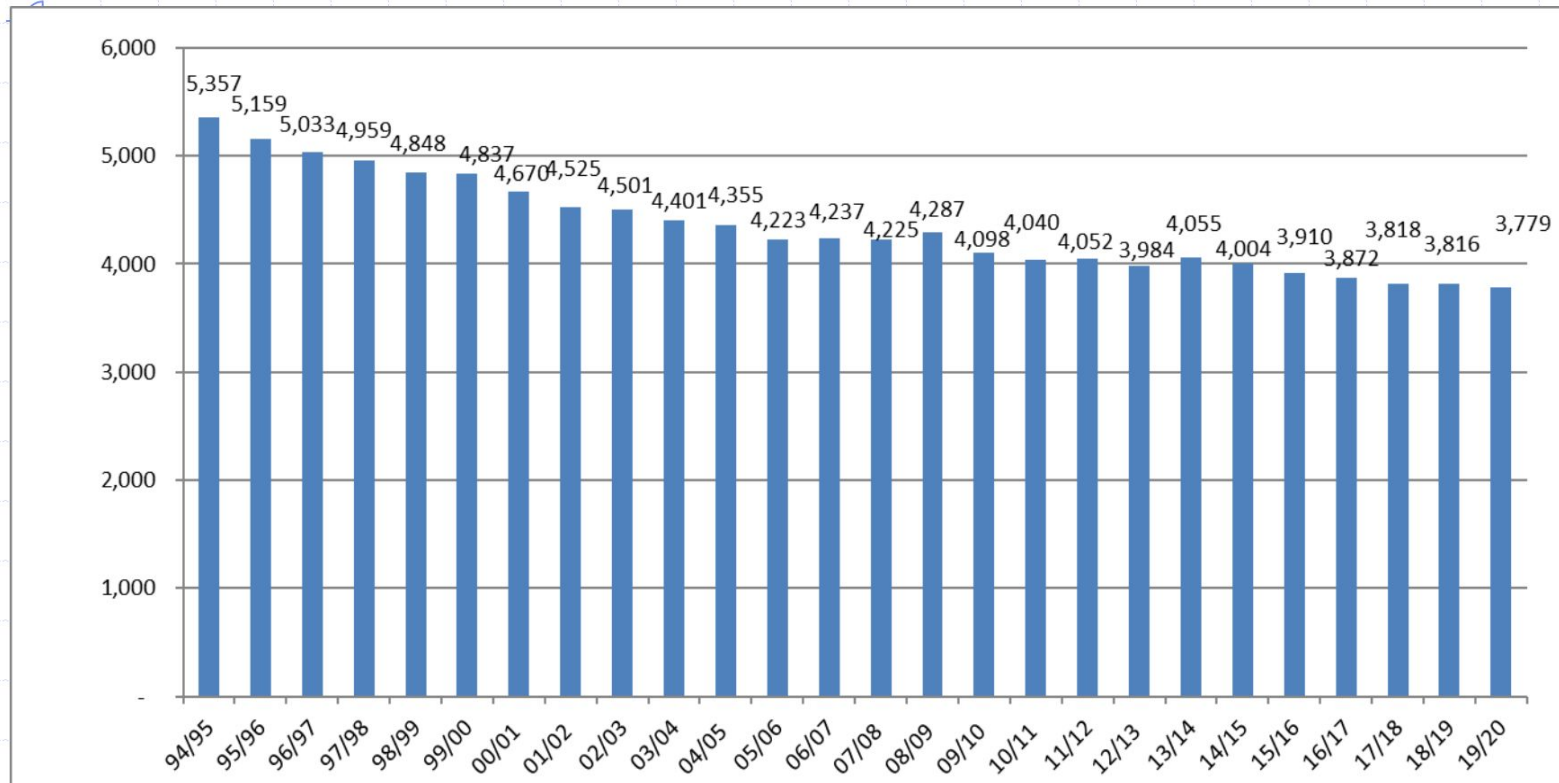
The final decision regarding the ward review rests with the Board.

## **Additional responsibilities**

1. Pembina Hills has a service agreement with Alberta Education to operate the Alberta Distance Learning Centre (ADLC) which provides student instruction and teacher support to schools across the province at no cost.
2. Pembina Hills operates the largest online school in the province, Vista Virtual School - offices are located in Edmonton and Calgary

# Pembina Hills Community Schools Enrolment Comparison

Kindergarten – Grade 12 1994/1995 to 2019/2020



# Municipal/Community Population & Representation

Municipality	Population	Trustee Electoral Ward & Population
County of Barrhead	6,288	Barrhead North (County & Fort): 3,320 Barrhead South: 3,144
Fort Assiniboine (Hamlet)	176	
Westlock County	7,220	Westlock North: 3,610 Westlock South (County & Clyde): 4,040
Clyde	430	
Swan Hills	1,301	Town of Swan Hills: 1,301
Town of Barrhead	4,579	Town of Barrhead: 4,579
Town of Westlock	5,101	Town of Westlock: 5,101

Population data is taken from the 2016 Statistics Canada census profile.

# School Population & Representation

Schools	K-12 Students (09/30/19)	Student Population per Trustee
BCHS - Barrhead Composite High	683	Town of Barrhead (BCHS, Outreach & BES): 1,410
Barrhead Outreach	55	
BES - Barrhead Elementary	672	
DU - Dunstable	49	Barrhead South (DU): 49
BU - Busby	117	Westlock South (BU and EH): 375
EH - Eleanor Hall	258	
FA - Fort Assiniboine	93	Barrhead North (FA and NPCS): 296
NPCS - Neerlandia Public Christian	203	
Pibroch Colony	27	Westlock North (Colonies and PNCS): 258
Sunny Bend Colony	27	
PNCS - Pembina North Community	204	
WES - Westlock Elementary	487	Town of Westlock (WES, RFS and Outreach): 1,184
RFS - RF Staples	665	
Westlock Outreach	32	
SH - Swan Hills	207	Town of Swan Hills: 207



# Trustee Cost Analysis

## Cost Analysis of an Individual Trustee

Monthly stipend \$485 x 12 mths.	\$5,820
Internet allowance \$40 x 12 mths.	\$480
Cell phone allowance \$20 x 12 mths.	\$240
Board Meetings 18 meetings/yr. x \$216 (8hrs.)	\$3,888
Board Planning 7 meetings/yr. x \$216 (8hrs.)	\$1,512
Principal's Planning 3 meetings/yr. x \$216 (8hrs.)	\$648

Total = \$12,588 year

# Variables

- Benefit costs varies depending on personal circumstances
- Committee meetings - number varies depending on appointments
- Professional development: a maximum of \$4,000 per four year term (*currently suspended*)
- Travel costs (.50 per km, a trustee's home is considered their office), and meals when required
- Provincial Fall and Spring Meetings, Rural Education Symposium
  - Hotel, registration, meals, per diem

Considering the variables, the average cost savings of one less trustee would be approximately **\$20,000 a year.**

# Ward Review - Option 1

The *current* electoral structure with three wards and seven electoral sub-divisions has existed since 1995.

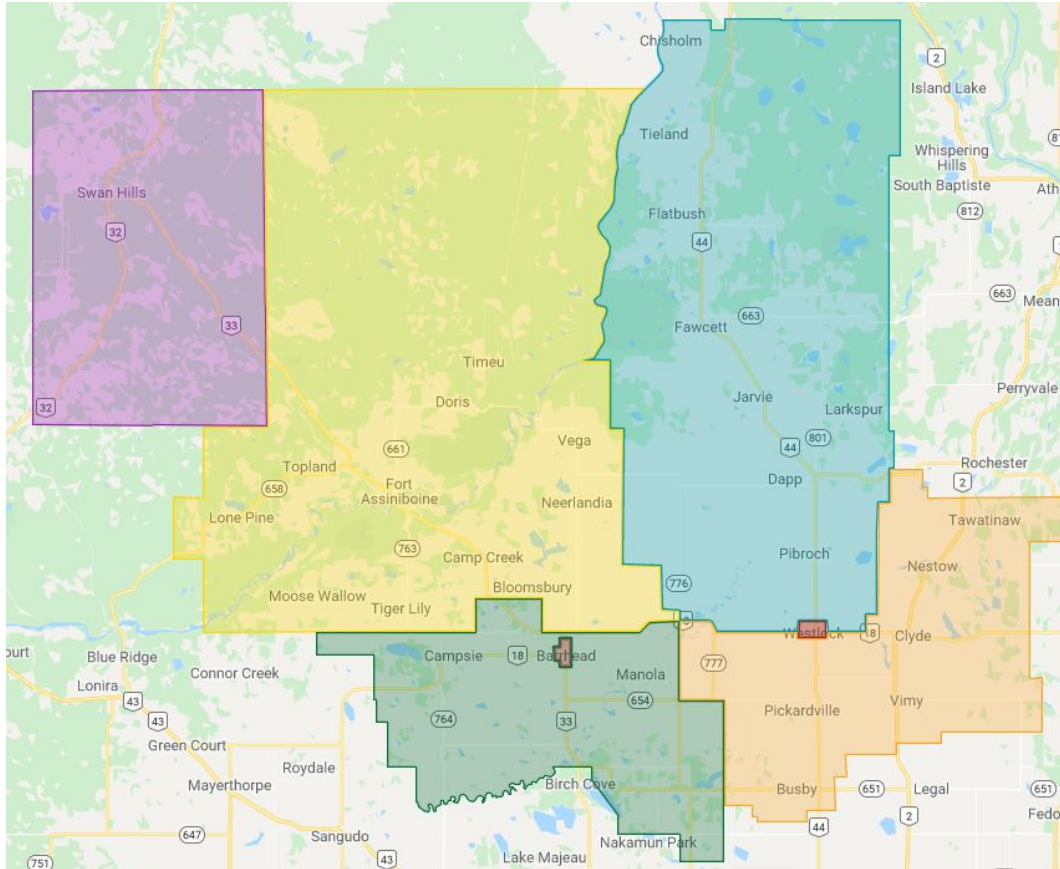
Three wards: the Barrhead ward, Swan Hills ward, and the Westlock ward

- Within the three wards are seven electoral sub-divisions
  - Barrhead North, Town of Barrhead, Barrhead South (one trustee each)
  - Westlock North, Town of Westlock, Westlock South (one trustee each)
  - Swan Hills (one trustee)

# Ward Review - Option 1

<b>Electoral Sub-division</b>	<b>Municipal Population</b>	<b>Number of students</b>	<b>Number of schools</b>
Barrhead North	3,320	296	2
Barrhead South	3,144	49	1
Town of Barrhead	4,579	1,410	2 schools, 1 outreach
Town of Swan Hills	1,301	207	1
Westlock North	3,610	258	1 school, 2 colonies
Westlock South	4,040	375	2
Town of Westlock	5,101	1,184	2 schools, 1 outreach

# Ward Review - Option 1



# Ward Review - Option 1

## *Things to consider:*

1. Retains number of trustees at 7 and maintains current level of responsibilities.
2. It does not provide equal representation of population (community or student) across electoral wards.
3. This structure has existed since 1995 when we had four more schools and 1,578 more students in the division.

# Ward Review - Option 2

Electoral structure with one ward and four electoral sub-divisions

One ward: Pembina Hills School Division

- Within the Pembina Hills School Division ward are four electoral sub-divisions:
  - Barrhead North-South (two trustees elected at large)
  - Westlock North-South (two trustees elected at large)
    - The north-south electoral sub-divisions will be divided by the boundary between Barrhead and Westlock counties
  - Town of Barrhead (one trustee)
  - Town of Westlock (one trustee)

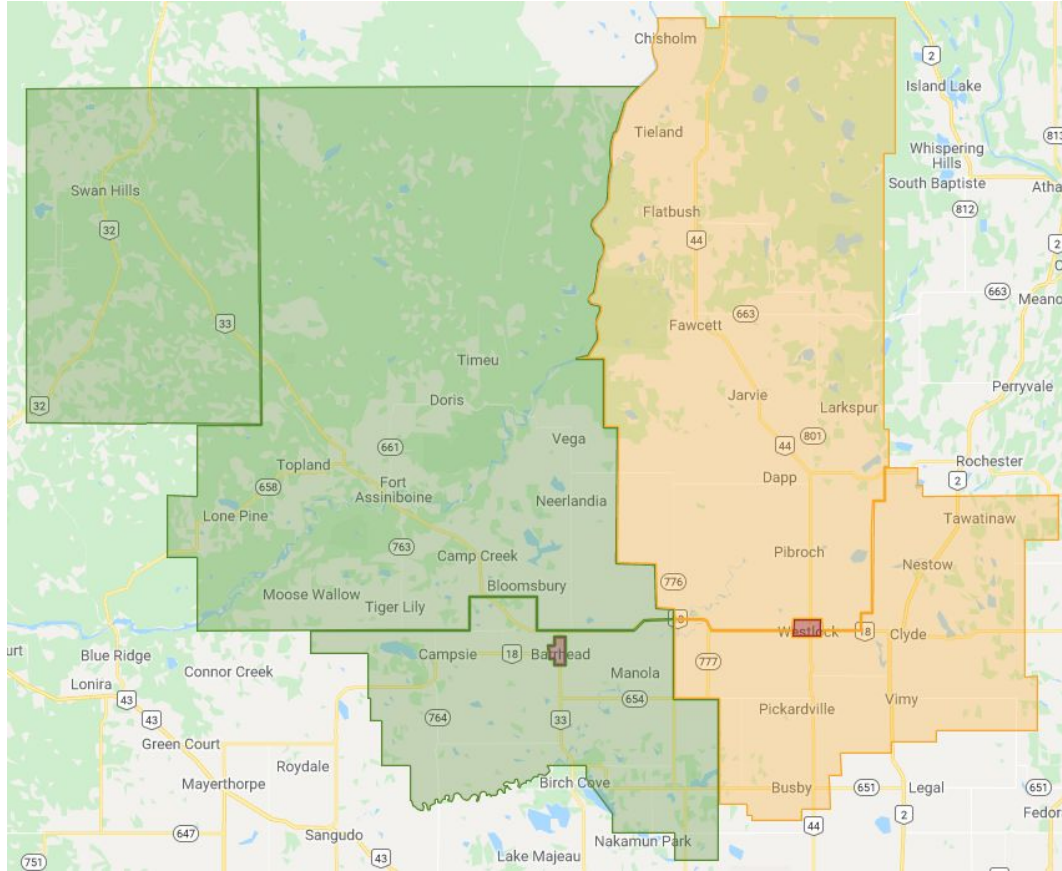
# Ward Review - Option 2

Electoral Subdivision	Municipal Population	Number of students	Number of schools
Barrhead North-South (2 trustees at large)	7,765 (3,882.5 per trustee)	552	4 community schools (SH, FA, NPCS, DU)
Westlock North-South (2 trustees at large)	7,650 (3,825 per trustee)	633	3 schools (PNCS, EH, BU), 2 colonies
Town of Barrhead	4,579	1,410	2 schools (BES, BCHS), 1 outreach
Town of Westlock	5,101	1,184	2 schools (WES, RFS), 1 outreach

**At large:** Electors can vote for two of the trustees listed on the ballot within that electoral sub-division.



# Ward Review - Option 2



# Ward Review - Option 2

## *Things to consider:*

1. This option combines 'at large' rural trustees with separate electoral subdivisions for the towns.
2. Allows flexibility for coverage of schools and therein responsibilities of trustees.
3. This structure makes it more equitable in balancing out the population in municipal numbers.
4. Covers sparsity/distance of rural areas by allowing for 'at large' trustees to divide up the responsibilities between them depending on where they reside.
5. Reduces number of trustees to 6.

# Ward Review - Option 3

Electoral structure with one ward and two electoral sub-divisions

One Ward: Pembina Hills School Division

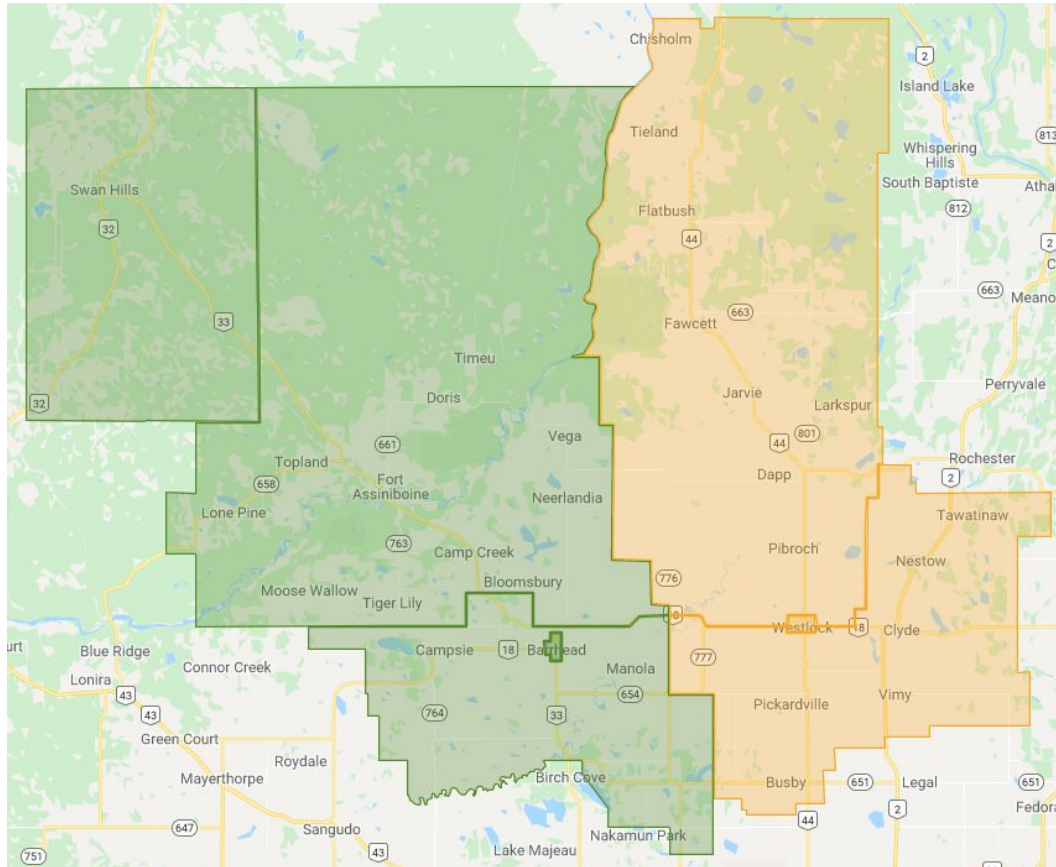
- Within the Pembina Hills School Division Ward are two electoral sub-divisions:
  - Pembina Hills West (three trustees elected at large)
  - Pembina Hills East (three trustees elected at large)
    - The west and east electoral sub-divisions will be divided by the boundary between Barrhead and Westlock counties

# Ward Review - Option 3

Trustee	Municipal Population	Number of students	Number of schools
Pembina Hills West (3 trustees at large)	12,344 (4,114.7 per trustee)	1,962	6 schools (SH, FA, NPCS, DU, BES, BCHS), 1 outreach
Pembina Hills East (3 trustees at large)	12,751 (4,250.3 per trustee)	1,817	5 schools (PNCS, EH, BU, WES, RFS), 2 colonies, 1 outreach

**At large:** Electors can vote for three of the trustees listed on the ballot within that electoral sub-division.

# Ward Review - Option 3



# Ward Review - Option 3

## *Things to consider:*

1. This option has six 'at large' trustees - three on the west side of the division, and three on the east.
2. There is no guarantee that the town or rural areas would have a representative as trustees may run for election from any part of the west or east side of the division.
3. This structure balances out the population in municipal and student numbers on each side of the division.
4. It allows flexibility for coverage of schools and therein responsibilities of trustees.
5. Reduces number of trustees to 6.

# Survey Questions

1. Have you attended a school council presentation on the ward review?
  - Yes
  - No
2. I support option (please check one box):
  - Option 1* Current electoral structure with three wards and seven electoral sub-divisions (7 trustees)
  - Option 2* Electoral structure with one ward and four electoral sub-divisions (6 trustees)
  - Option 3* Electoral structure with one ward and two electoral sub-divisions (6 trustees)
3. What should the school board keep in mind as it makes its decision about the ward review?

# Additional Information

The survey can be found on the Pembina Hills website at [www.pembinahills.ca](http://www.pembinahills.ca)

We would encourage people to fill it out electronically, but paper copies will be accepted.

**The survey will close on Monday, February 10, 2020.**

The Board will post a “What We Heard” summary report upon completion of the process.

This presentation can be found on the Pembina Hills website.



# Questions?